

# MONTHLY MEMBERSHIP PROGRESS REPORT

LOCATION FLORIDA

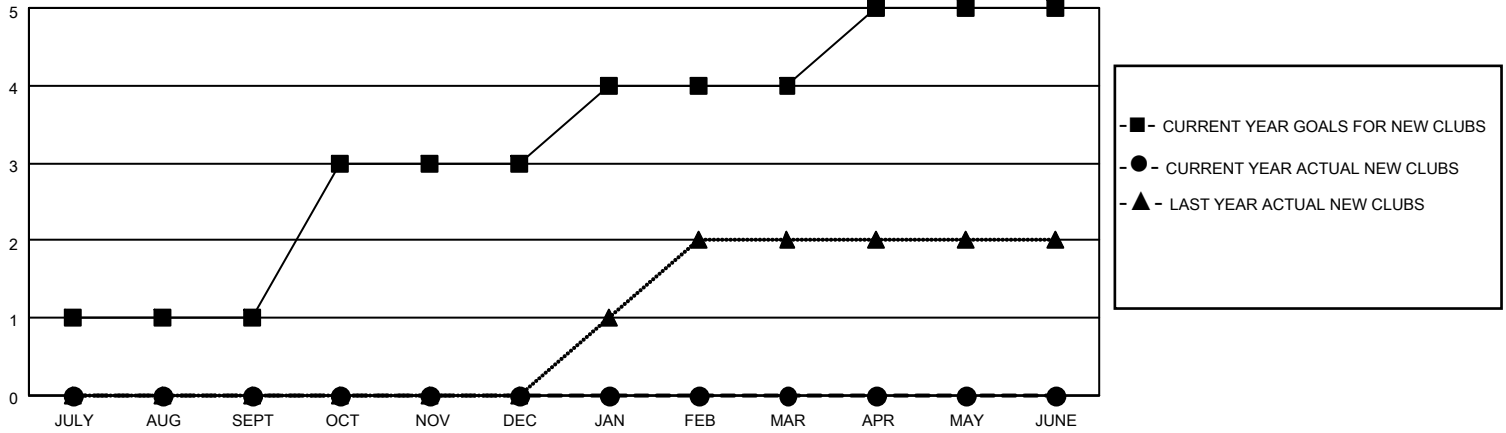
District 35 I

Results as of: 6/30/2023

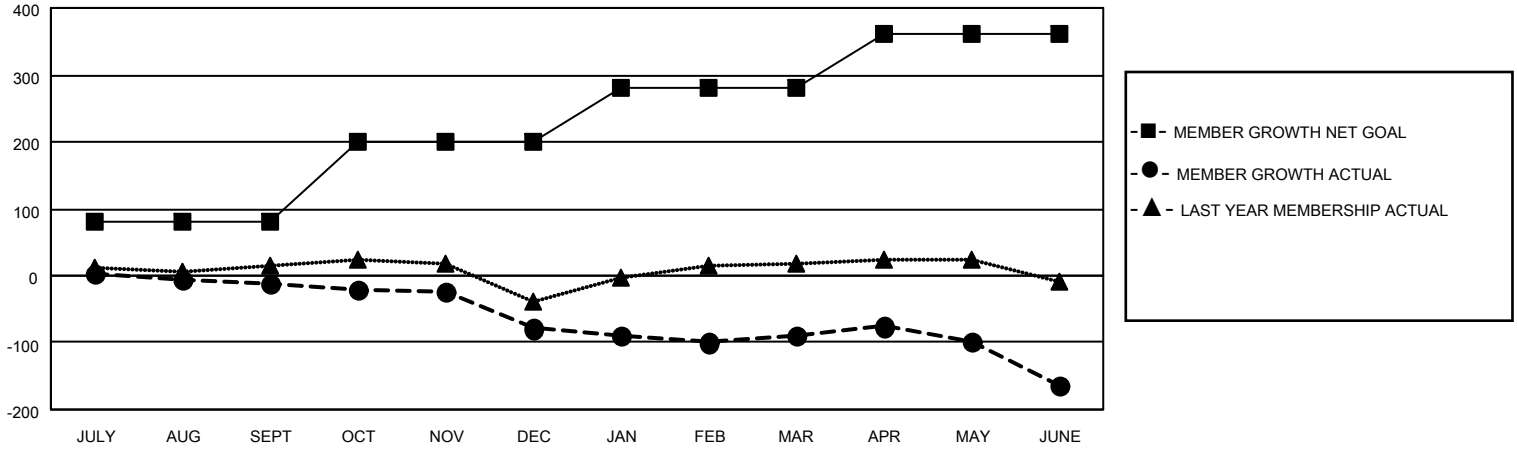
Clubs			
RESULTS FOR 2022-2023			
QUARTER	NEW CLUB GOAL	NEW CLUBS	DROPPED CLUBS
JULY/AUG/SEPT	1	0	0
OCT/NOV/DEC	2	0	1
JAN/FEB/MAR	1	0	2
APR/MAY/JUNE	1	0	2

Members			
RESULTS FOR 2022-2023			
QUARTER	MEMBER GROWTH NET GOAL	MEMBER GROWTH ACTUAL	DROPPED MEMBERS ACTUAL (including transfers)
JULY/AUG/SEPT	80	33	36
OCT/NOV/DEC	120	27	91
JAN/FEB/MAR	80	69	56
APR/MAY/JUNE	80	64	121

**GOALS AND ACTUAL NEW CLUBS CUMULATIVE**



**GOALS AND ACTUAL MEMBERS CUMULATIVE**



**DROPPED CLUBS: 5**

**25 CLUBS OF 46 ADDED 1 OR MORE NEW MEMBERS**

**GENDER DISTRIBUTION**

**DROPPED MEMBERS**

DECEASED	18
CLUB CANCELLED	65
OTHER	221
<b>TOTAL</b>	<b>304</b>

[CLICK HERE FOR CUMULATIVE MEMBERSHIP DATA](#)

MALE	519 (49.33%)
FEMALE	533 (50.67%)
NON BINARY	0 (0.00%)
PREFER NOT TO ANSWER	0 (0.00%)

TOTAL FAMILY UNIT MEMBERS 307

FAMILY MEMBERS PAYING HALF DUES 156